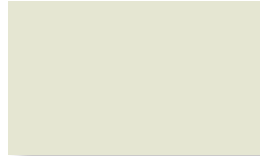


**Bright White (39)**  
CF45 - 29 ga  
CF40 - 29 ga



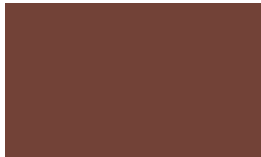
**White (30)**  
CF45 - 29 ga  
CF40 - 29 ga



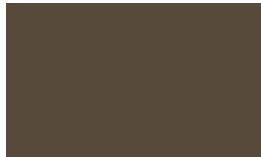
**Light Stone (63)**  
CF45 - 29 ga  
CF40 - 29 ga



**Mocha Tan (22)**  
CF45 - 29 ga  
CF40 - 29 ga



**Brown (12)**  
CF45 - 29 ga  
CF40 - 29 ga



**Burnished Slate (49)**  
CF45 - 29 ga  
CF40 - 29 ga



**Taupe (74)**  
CF45 - 29 ga



**Ash Grey (25)**  
CF45 - 29 ga  
CF40 - 29 ga



**Charcoal (17)**  
CF45 - 29 ga  
CF40 - 29 ga



**Red (24)**  
CF45 - 29 ga  
CF40 - 29 ga



**Patriot Red (73)**  
CF45 - 29 ga  
Premium Color - Up charge will apply



**Dark Red (46)**  
CF45 - 29 ga  
Premium Color - Up charge will apply



**Burgundy (15)**  
CF45 - 29 ga  
CF40 - 29 ga



**Hawaiian Blue (70)**  
CF45 - 29 ga



**Ocean Blue (35)**  
CF45 - 29 ga  
CF40 - 29 ga



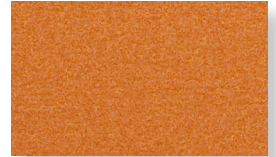
**Patina Green (58)**  
CF45 - 29 ga



**Forest Green (26)**  
CF45 - 29 ga  
CF40 - 29 ga



**Black (06)**  
CF45 - 29 ga  
CF40 - 29 ga



**Native Copper (190)**  
CF45 - 29 ga  
Premium Color - Up charge will apply



**Galvanized (00)**  
Non-Painted Finish - No Warranty  
29 gauge



**Galvalume<sup>®</sup> (41)**  
Non-Painted Finish - 25 Year Warranty  
29 gauge



All Colors Meet or Exceed  
Steep Slope ENERGY STAR<sup>®</sup>  
Requirements

**metalsales.us.com**

MS(12R)/7-18

